



**Full Committee Meeting
24 October 2024**

NAME: CAPT. ADAM HANSLEY

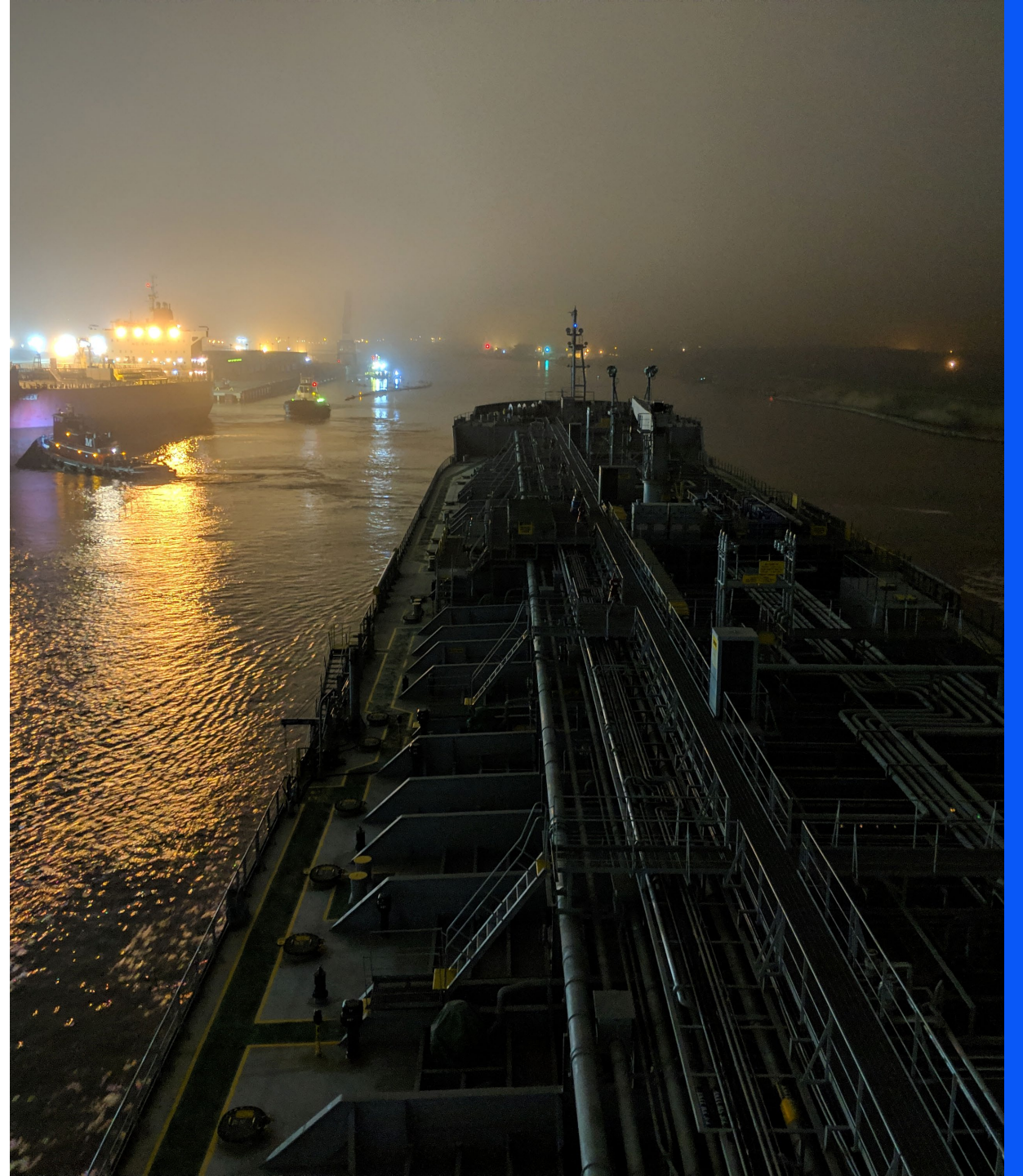
DATE: OCTOBER - 2024

SABINE PILOTS TUG MATRIX

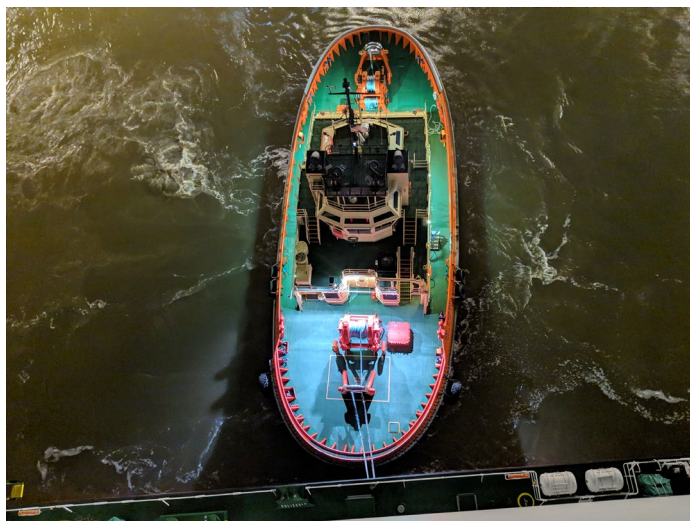
TUG MATRIX OVERVIEW

OBJECTIVES AND BENEFITS

The Tug Matrix serves to enhance safety and efficiency in the assist and escort operations of vessels. It provides essential guidance on the types and sizes of tugs needed for various tasks, welcome feedback for continual improvement, ensures stakeholder collaboration to achieve safety standards, and endorses fleet upgrades for handling larger vessels effectively.



IMPORTANCE OF TUG MATRIX

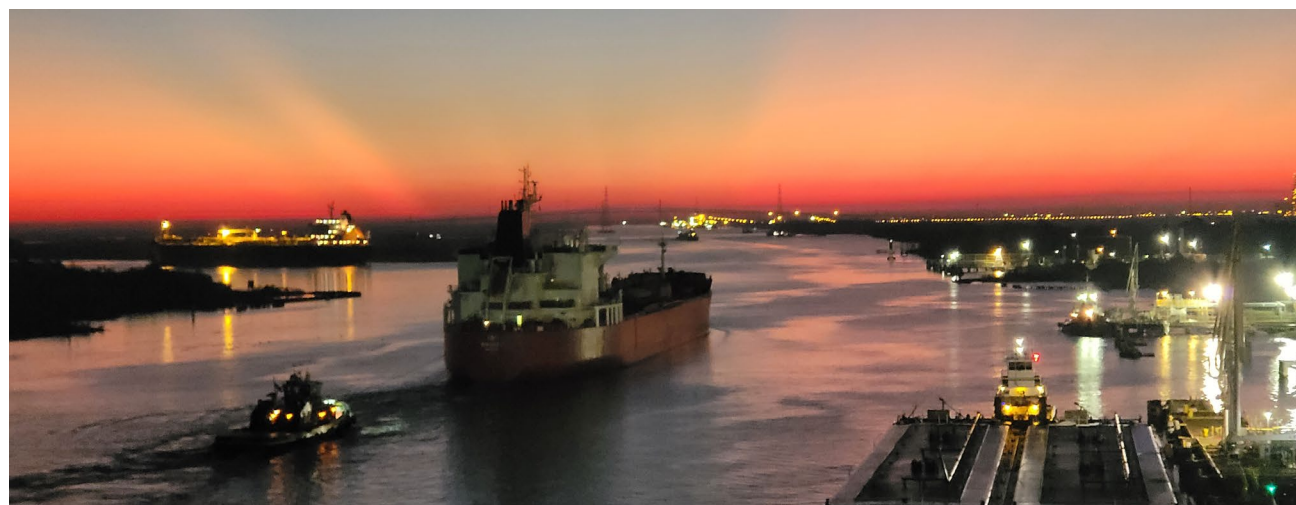


STAKEHOLDER COLLABORATION

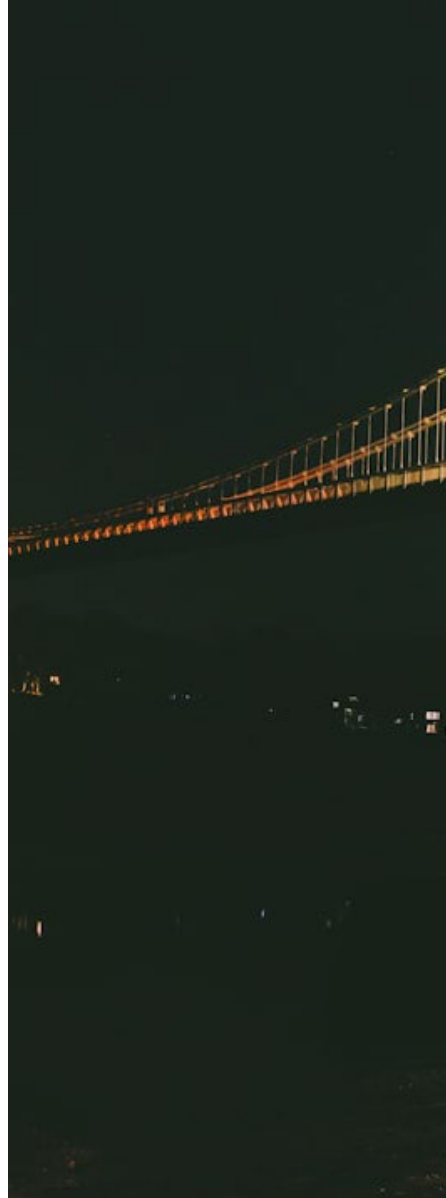
The Tug Matrix engages stakeholders, inviting them to share specific operational needs, thus keeping updates relevant and aligned with safety regulations.

INCREASING VESSEL SIZES

Due to the rising dimensions of vessels and increased traffic in waterways, the need for larger, more robust tugs has never been greater to ensure safe operations.



AIR GAP SENSOR NEED



NAVIGATIONAL CHALLENGES

Navigating under the Martin Luther King (MLK) Bridge necessitates precise air gap knowledge to ensure the safe passage of large vessels. The proposal for a dedicated air gap sensor aims to provide real-time clearance data, critical for efficient navigation.

FUNDING AIR GAP SENSOR

This table outlines potential sponsors for the air gap sensor installation and the corresponding benefits to waterway operations. Collaboration with local industries can enhance safety and support economic growth.

POTENTIAL SPONSORS	BENEFITS	NOTES
Local Industries	Enhanced waterway safety	Promotes regional economic activity
NGL Terminals	Reduces risk of bridge strikes	Ensures compliance with safety standards
Shipping Companies	Prevent costly damages	Improves operational efficiency

ACTION ITEMS

ENGAGE SPONSORS

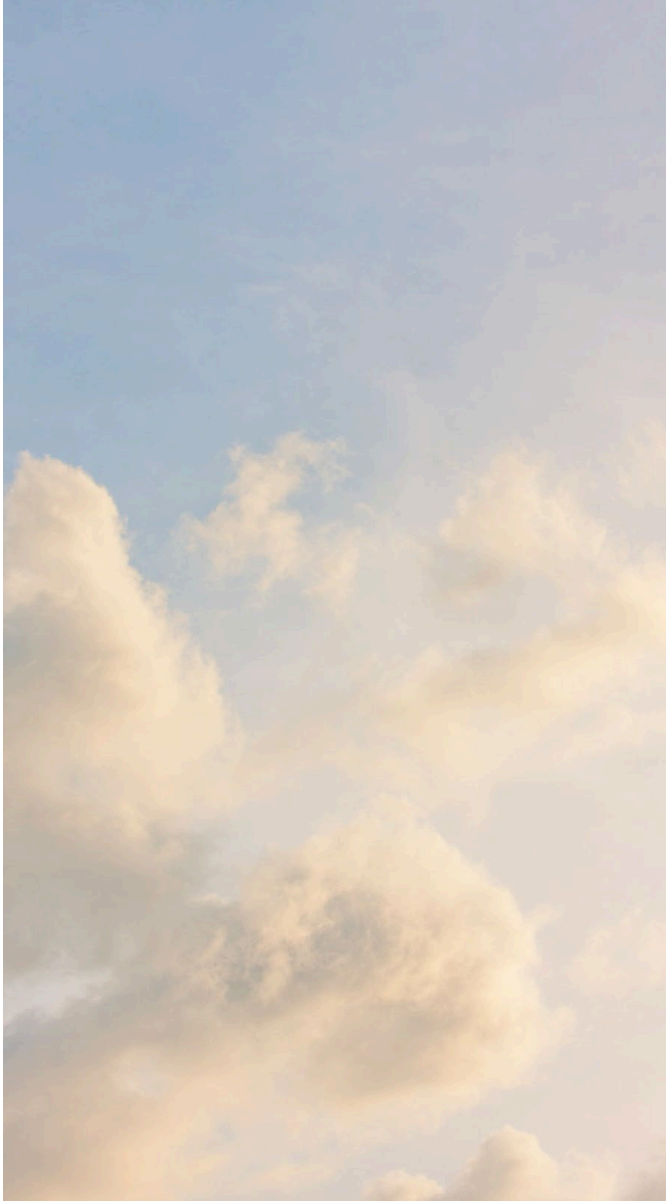
Actively seek out potential sponsors who are interested in funding the installation of the air gap sensor, highlighting the importance of safety for all navigational users.

COLLABORATE ON UPDATES

Continue fostering collaborative relationships with stakeholders to ensure the Tug Matrix remains current and effective in enhancing operational safety.

POINT OF CONTACT

Disseminate contact information for stakeholders to reach out about sponsorship opportunities or for inquiries relating to the Tug Matrix and air gap sensor.



CONTACT INFORMATION

GET IN TOUCH

For further inquiries or collaboration opportunities regarding the Sabine Pilots Tug Matrix and the air gap sensor initiative, please contact:

Email: president@sabinepilots.com

Phone: (409) 515-4240

We look forward to your engagement!



Tug Utilization Sub-Committee Report (Ad Hoc)



Education, Research and Workforce Development Subcommittee Report

Mr. Rob Dubois, Lamar University



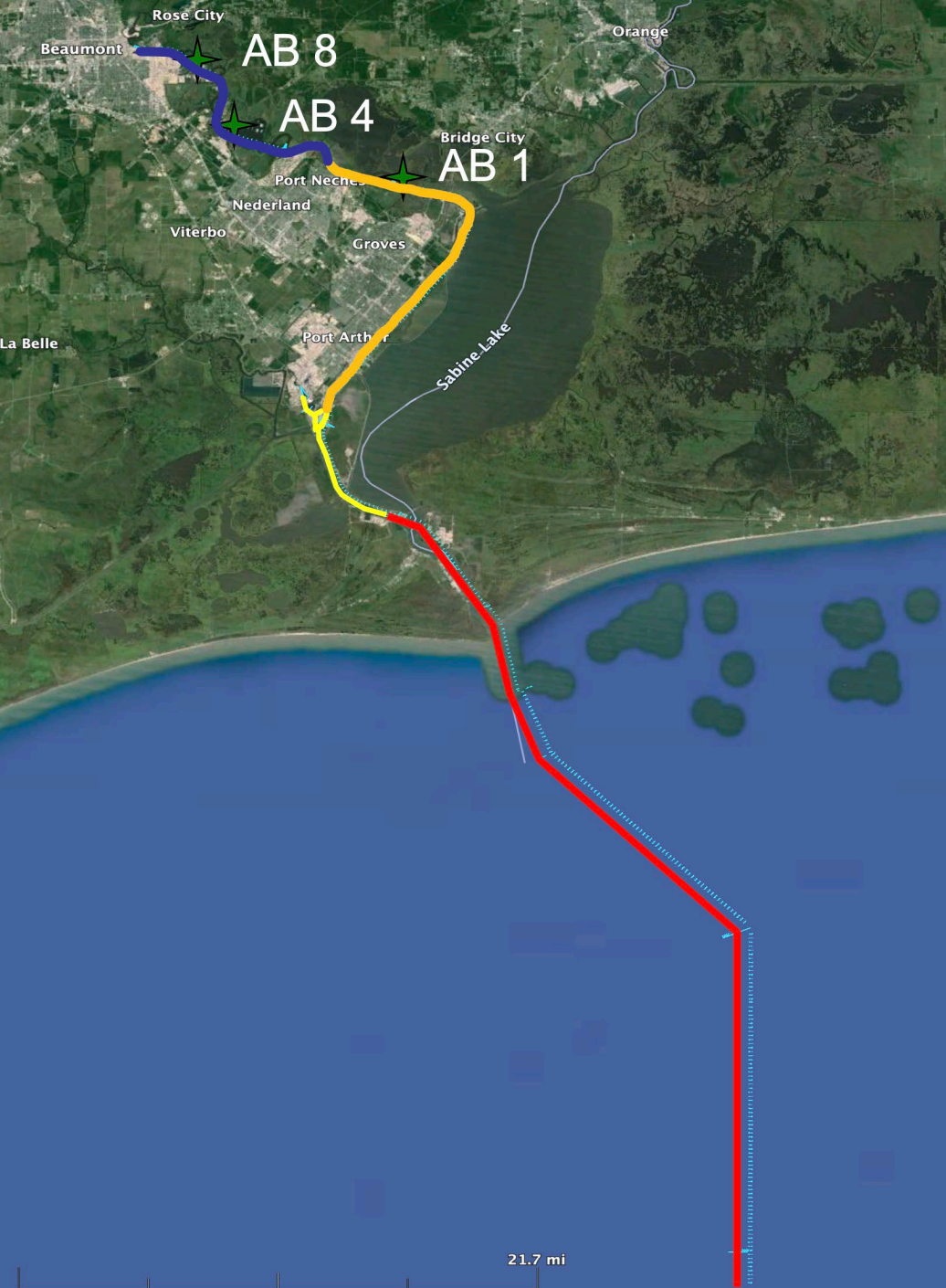
COMMERCIAL FISHERIES – COMMERCIAL FISHING VESSEL EXAMINER

Southeast Texas Waterway Advisory Committee

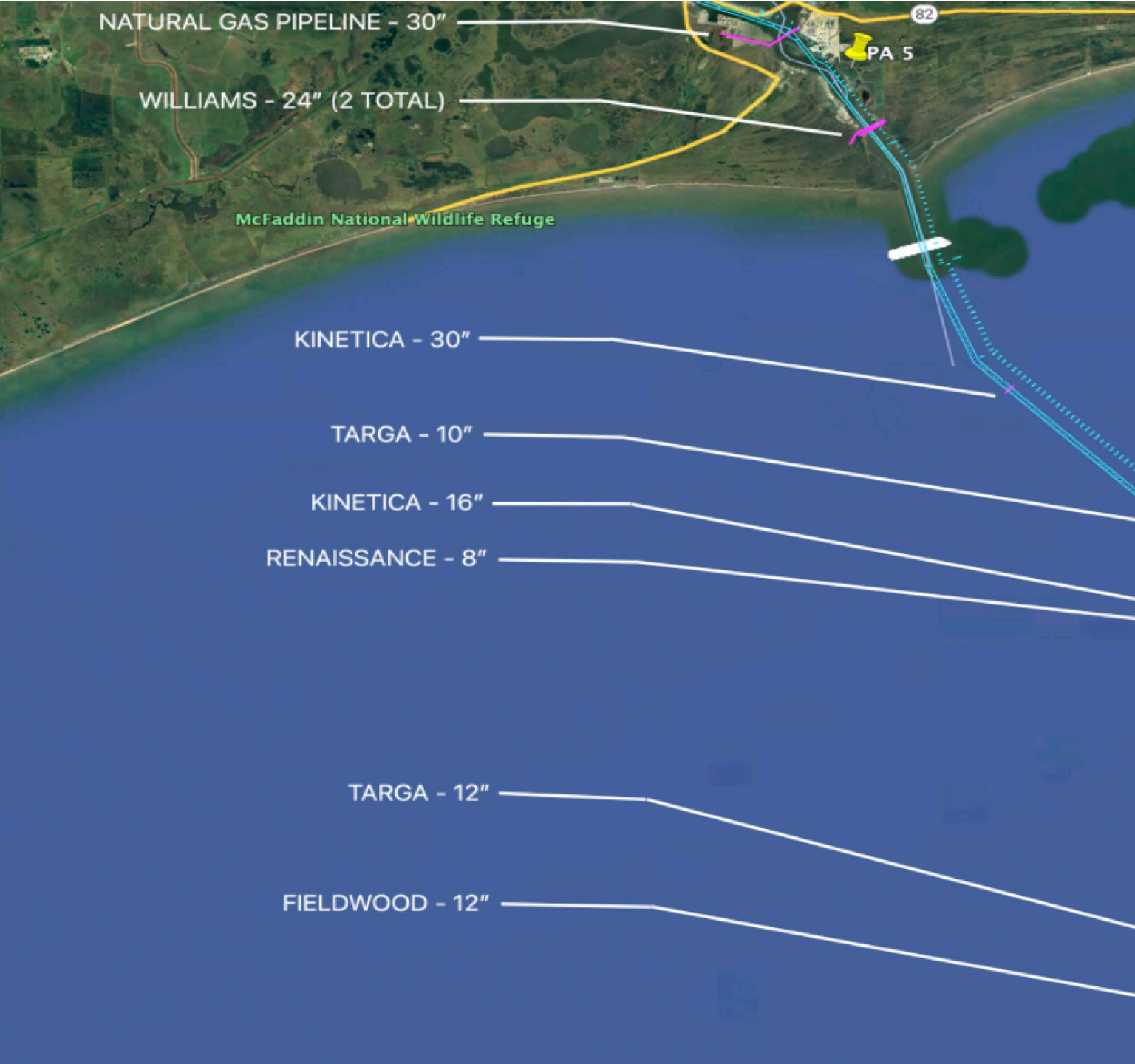
Nikki Fitzgerald



**Waterway Maintenance and Improvement
Subcommittee Report**
Kyle Reed, Sabine-Neches Navigation District



<u>Contract Number</u>	<u>Color</u>	<u>Contract Name</u>	<u>Award Year</u>	<u>Owner of Contract</u>
1	-	DREDGE ANCHORAGE BASIN #1	FY 19	USACE
2A	Red	DREDGE OFFSHORE CHANNEL TO SABINE BANK CHANNEL	FY 21	USACE
2B	Red	DREDGE SABINE BANK CHANNEL TO SABINE PASS CHANNEL	FY 23	SNND
3	Yellow	DREDGE SABINE PASS CHANNEL TO TAYLOR BAYOU	FY 24	SNND
4	Orange / Blue	DREDGE LOWER SABINE NECHES CANAL TO LOWER NECHES RIVER CHANNEL	FY 25	SNND
6	Red	DREDGE SABINE PASS JETTY CHANNEL TO SABINE BANK EXTENSION	FY 24	USACE
7	Yellow	DREDGE SABINE PASS CHANNEL TO TAYLOR BAYOU	FY 25	USACE
8	Orange	DREDGE LOWER SABINE NECHES CANAL TO LOWER NECHES RIVER CHANNEL	TBD	USACE
9	Blue	DREDGE MID NECHES RIVER CHANNEL TO UPPER NECHES RIVER CHANNEL	TBD	USACE
10	-	MITIGATION WEST BLACK BAYOU, LA	TBD	USACE
11	-	MITIGATION EAST BLACK BAYOU, LA	TBD	USACE
12	-	MITIGATION WILLOW BAYOU, LA	TBD	USACE
13	-	DREDGE ANCHORAGE BASIN #8	FY 24	SNND
14	-	DREDGE ANCHORAGE BASIN #4	FY 25	SNND



SNWW CHANNEL IMPROVEMENT PROJECT - - PIPELINE STATUS				
Owner	Pipe Size	Stationing	Status	Anticipated Removal Date
Natural Gas Pipeline	30"	242+28	Removed	-
Williams	24"	36+69	No longer needing to be removed	-
Williams	24"	41+69	No longer needing to be removed	-
Kinetica	16"	81+666	Beginning soon	Early November
Kinetica	30"	24+858	Awaiting FERC approval	TBD
Targa	10"	56+690	Awaiting BSEE approval	Late November
Targa	12"	139+909	Awaiting BSEE approval	Late November
Renaissance	8"	82+889	Awaiting confirmation that line is deep enough to left in place	-
Fieldwood	12"	149+958	Removed	-

Sabine-Neches Waterway

Operations and Maintenance Update

Timothy J. White, P.E., PMP
Resident Engineer

Sara C. Knoll, P.E.
Operations Manager

USACE – Galveston District

SETWAC Meeting
Oct 24, 2024



®

US Army Corps of Engineers
BUILDING STRONG®



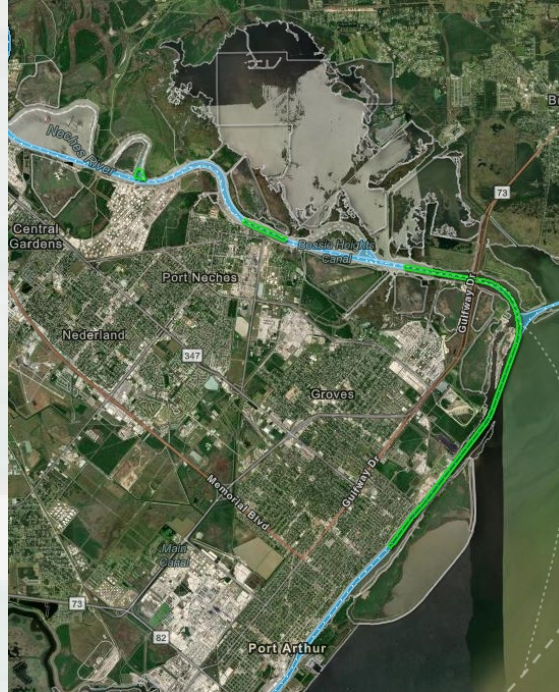
Ongoing Contracts

Sabine-Neches Waterway





SABINE-NECHES WATERWAY FY24 SNWW Maintenance Dredging



Estimated start Dec. 2024

Project:	Sabine-Neches Waterway FY24 SNWW Maintenance Dredging
Dredging Depth:	40ft + Advance Maint.
Dredging Quantity:	3 MCY
Material Type:	MAINTENANCE
Dredge Type	Pipeline Dredge
Award:	September 2024
Req. Completion	July 2025

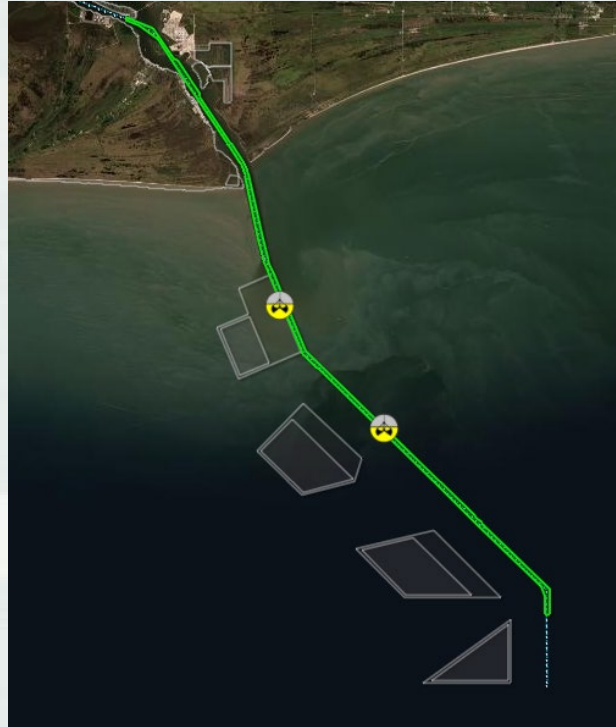
Contractor: Muddy Water Dredging



BUILDING STRONG®



SABINE-NECHES WATERWAY SABINE BANK TO SABINE PASS DEEPENING



Construction ongoing.

Project:	Sabine-Neches Waterway Sabine Bank Channel to Sabine Pass Channel Half Depth (Contract #2B)
Dredging Depth:	46/44 feet + Adv Maint.
Material Type:	NEW WORK
Dredge Type	Hopper Dredge
Award:	December 2023
Req. Completion	December 2024

Awarded by SNND.

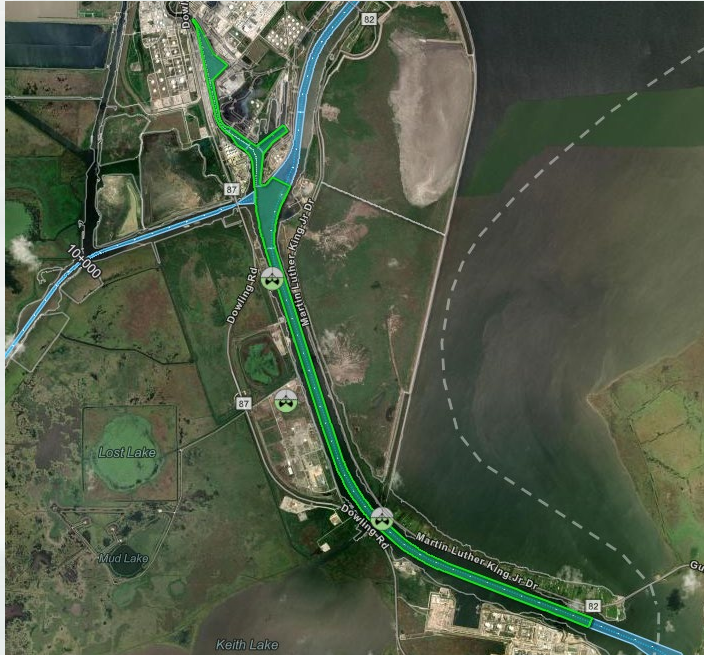
Contractor: Great Lakes
Dredge & Dock



BUILDING STRONG®



SABINE-NECHES WATERWAY PORT ARTHUR CANAL & TAYLOR'S BAYOU DEEPENING



Construction ongoing.

Project:	Sabine-Neches Waterway Port Arthur Canal, Taylor's Bayou Half Depth (Contract #3)
Dredging Depth:	44 feet + Adv Maint.
Material Type:	NEW WORK
Dredge Type:	Pipeline
Award:	July 2024
Req. Completion	January 2025

Awarded by SNND.

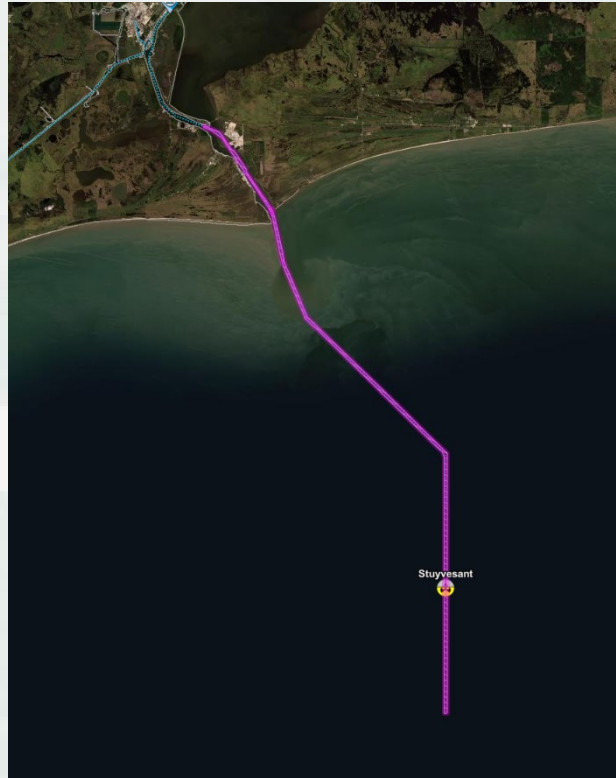
Contractor: Crosby Dredging



BUILDING STRONG®



SABINE-NECHES WATERWAY EXTENSION CHANNEL TO SABINE PASS DEEPENING



Construction pending.

Project:	Sabine-Neches Waterway – CIP (Contract #6 – Full Depth – Sabine Entrance Channel)
Dredging Depth:	48/50 feet + Adv Maint.
Material Type:	NEW WORK
Dredge Type:	Multiple
Award:	September 2024
Req. Completion:	Summer 2026

Awarded by USACE.
Contractor: Great Lakes

POC:
Franchelle Nealy
Project Manager
409-766-3187



BUILDING STRONG®

FY 2025

Future Dredging Contracts

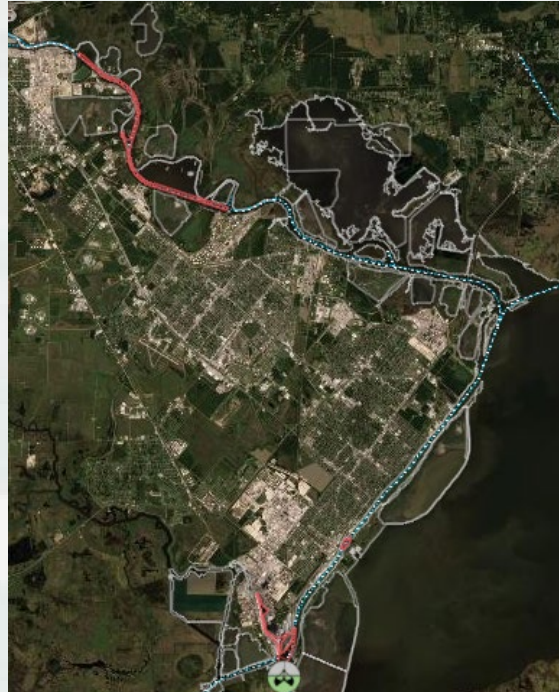
Sabine-Neches Waterway



BUILDING STRONG®



SABINE-NECHES WATERWAY FY25 SNWW Maintenance Dredging



Project:	Sabine-Neches Waterway FY25 SNWW Maintenance Dredging
Dredging Depth:	40/44ft + Advance Maint.
Dredging Quantity:	3 MCY
Material Type:	MAINTENANCE
Dredge Type	Pipeline Dredge
Award:	August 2025
Req. Completion	February 2026

Contractor: TBD



BUILDING STRONG®



SABINE-NECHES WATERWAY ANCHORAGE BASIN 8 EXISTING DEPTH



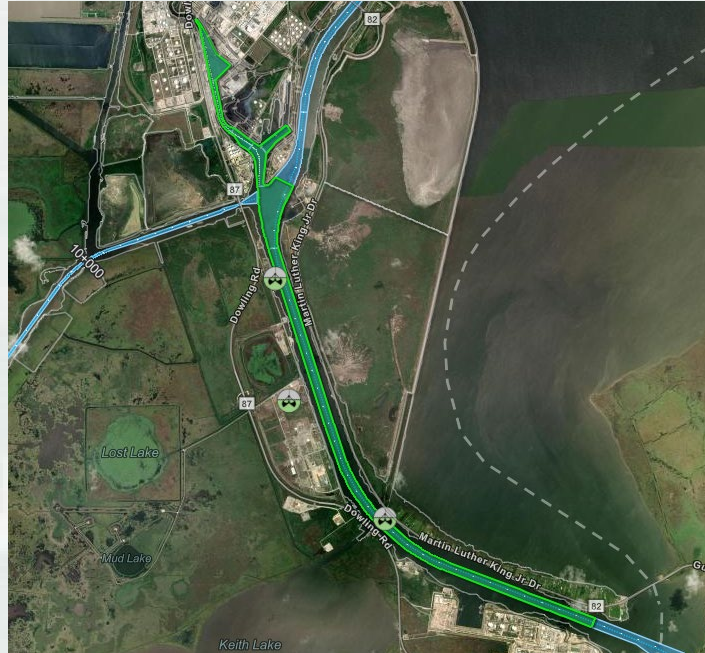
Project:	Anchorage Basin 8 – Existing Depth (Contract #13)
Dredging Depth:	40 feet + Adv Maint.
Material Type:	NEW WORK
Award:	SNND: FY25

To be awarded by SNND.
Contractor: TBD





SABINE-NECHES WATERWAY SABINE PASS, PORT ARTHUR CANAL, & TAYLOR'S BAYOU DEEPENING



Project:	Sabine-Neches Waterway Sabine Pass, Port Arthur Canal, & Taylor's Bayou – Full Depth (Contract #7)
Dredging Depth:	48 feet + Adv Maint.
Material Type:	NEW WORK
Award:	USACE: FY25/26

To be awarded by USACE.
Contractor: TBD

POC:
Franchelle Nealy
Project Manager
409-766-3187



**SABINE
TO GALVESTON

PORT ARTHUR
&
ORANGE**



BUILDING STRONG®



Orange County Coastal Storm Risk Management Project



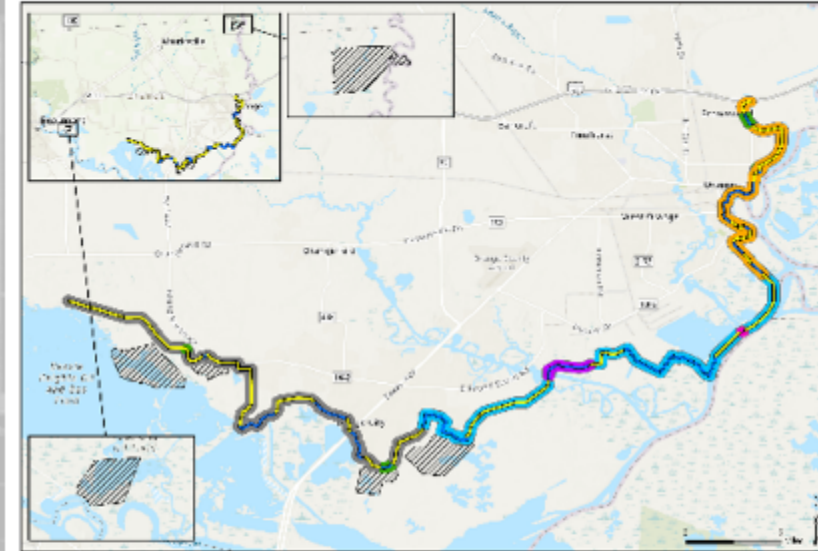
US Army Corps of Engineers

A new levee/floodwall system:

The Orange County Coastal Storm Risk Management (CSRM) Project includes construction of a new levee/floodwall system to reduce storm surge damage caused by hurricane and tropical storm events that affect the southern half of Orange County along the Sabine River and Bessie Heights Marsh. The proposed project alignment follows the edge of the Sabine and Neches River floodplain from the City of Orange and ends West of Bessie Heights, measuring approximately 26.3 miles. This includes construction of 15.6 miles of levees, 10.7 miles of floodwalls, 7 pump stations, 56 internal drainage structures, 32 closure gates located at road and railway crossings, 2 navigable sector gates and 6 environmental mitigation areas.

Objectives:

The new CSRM Project is intended to reduce risk to human life and reduce economic damages to business, residents, and infrastructure from storm surge while ensuring no **additional** induced interior flooding.



Orange County Coastal Storm Risk Management Project

Levee
 Floodwall
 Closure Gate
 Navigable Sector Gate
 Environmental Mitigation Area
 Contract OC01
 Contract OC02
 Contract OC03
 Contract OC04
 Contract OC05
 Contract OC06

Project Schedule:



Contract #	Scope	Contract #	Scope
OC01	Cow Bayou Complex – 84 ft Navigable Gate, Pump Station	OC04	7 Pump stations, tie ins, gates, drainage structures
OC02	2.4 miles floodwall, 3.0 miles levee, 18 gates, drainage structures	OC05	2.6 miles floodwall, 7.6 miles levee, 7 gates, drainage structures
OC02A	4.2 miles floodwall, 4.9 miles levee, 5 gates, drainage structures	OC06	6 Mitigation sites to compensate for impacts to forested wetlands and estuarine marsh
OC03	Adams Bayou Complex – 84 ft Navigable Gate, Pump Station		





Port Arthur and Vicinity Coastal Storm Risk Management Project



US Army Corps of Engineers

Reinforcement of an existing levee/floodwall system:

The Port Arthur and Vicinity Coastal Storm Risk Management (CSRM) Project in Jefferson County will result in improvements and additions to the existing Hurricane Flood Protection Project (HFPP). The plan includes raising approximately 5.5 miles of the existing 27.8 miles of earthen levee and constructing or reconstructing approximately 5.7 miles of floodwall. A separate 1,830 feet of new earthen levee will be constructed in the Port Neches area northwest of the existing northern terminus. Additionally, 26 vehicle closure structures will be replaced and erosion protections will be added.

Objectives:

The improved CSRM system is intended to increase the level of performance and resiliency of the existing Port Arthur and Vicinity HFPP.



Road closure gate



Port Arthur and Vicinity Coastal Storm Risk Management Project



Project Schedule:

Q1 FY19

Design

PPA Signed
29 Nov 2019

Q2 FY20

Construction

Q1 FY27

Contract #	Scope	Contract #	Scope
PAV01	1.1 miles levee raise	PAV03A	3.3 miles levee raise, 1.9 miles floodwall replacement, 1 gate
PAV02	0.2 miles floodwall replacement	PAV03B	0.02 miles levee raise, 0.5 miles floodwall replacement, 7 gates
PAV03	0.1 miles levee raise, 1.0 miles floodwall replacement, 11 gates	PAV04	0.4 miles levee raise, 0.4 miles new levee, 2.0 miles floodwall replacement, 3 gates



Questions?



Sara C. Knoll, P.E.
CESWG-ODN
409-207-3131
sara.c.knoll@usace.army.mil

Timothy J. White, P.E., PMP
CESWG-ECC-NP
409-985-2000 ext.1412
timothy.j.white@usace.army.mil



BUILDING STRONG®

MSU Port Arthur Port Security Specialist



Michael J. Hiatt

409-284-5775 Mobile

409-723-6525 Desk

Michael.j.hiatt2@uscg.mil

Southeast Texas and Southwest Louisiana Area Maritime Security Committee

Port Security Grant Program: FY25-Now is the time to socialize your projects with the COTP/PSS. Do not be discouraged by last year.

AMSC FSO/VSO Subcommittee meeting will be held on December 10th at 10am at the Orange County Expo Center. This subcommittee has grown from 3 to over 50 in the last two years. If great information sharing, we are strengthening the security of the entire port. You must sign an NDA to attend.

Protest and Drones (UAS) continue to a main concern. If you have a drone sighting over your facility or ship, report it to the National Response Center (NRC) – 1-800-424-8802

Port Security Resiliency Assessment evaluating 6 SETX select assets against specific threats that may initiate a Transportation Security Incident (TSI). Jan 22nd through the 31st

Port Security Grants Program

FEMA Grant POC:

Lurranda “Rene” Phillips

(202)368-5487 Work Mobile

(202)786-9735 Desk

Lurranda.Phillips@fema.dhs.gov

**If you have questions pertaining to your FY24 PSG please reach out to FEMA for details.
The USCG is unable to comment on why and why not!**

Questions?

Michael J. Hiatt

409-284-5775 Mobile

409-723-6525 Desk

Michael.j.hiatt2@uscg.mil

USCG ANT Sabine ATON Report





New Business

Marine Lab, Weather Monitoring

Dr. Scott Beatty, CEO

Office: +1 (778)817-1198

Email: scott.beatty@marinelabs.io



- **SB Buoy LLNR 22300 - Position 29-25.-00.799N 093-39-53.731W – Floating, WX, Camera, Sea State, CG owned**
- **LB 29 LLNR 22400 - Position 29-35-53.830N 093-48-20.620W - Floating, WX, Camera, Sea State, CG owned**
- **East Jetty Light LLNR 22440 - Position 29-38.40.592N 093-49-21.968W – Fixed on rock jetty, camera, weather, CG owned**
- **Anchorage Basin Light “A” LLNR 22575 - Position 29-44-05.086 n 093-51-54-54.334W – Fixed pile, private, ours, camera/weather**
- **Sabine Bank Light LLNR 1095 - Position 29-28-21.846N 093-43-21.294 – Fixed, offshore 18 miles, old lighthouse, camera, weather, CG owned**



Next Full Committee Meeting
23 January 2025