



Full Committee Meeting
25 April 2024

Navigation Subcommittee Report

Captain Wesley Moore, Sabine Pilots



Navigation Sub-Committee



- East Jetty Light-Overview
- Pilot Helicopter Trial
- Deepening & Dredging-Discussion



Tug Utilization Sub-Committee Report (Ad Hoc)

Captain Sean Marchant, Valero



Education, Research and Workforce Development Subcommittee Report

Mr. Rob Dubois, Lamar University

SOUTHEAST TEXAS
WATERWAY ADVISORY
COMMITTEE'S
SEAFARER WELFARE
SUBCOMMITTEE





Seafarer Welfare Subcommittee

- Intern opportunity through the North American Maritime Ministry Association: Contact PAISC: 409-982-4504
- National Maritime Day Observance: May 22, 2024
 - See: <https://paisc.org/maritime-day>
- Texas National Maritime Day Gala: Thursday, May 23, 2024
 - See: <https://paisc.org/texasnationalmaritimedaygala2024>
- MARAD Work-Life Balance Symposium: Recruiting for an unseen and unknown career.



COMMERCIAL FISHERIES

Southeast Texas Waterway Advisory Committee

Nikki Fitzgerald

SHRIMPER'S MEETING INFO

- Met Jan 30th – 78 fishermen
- Meeting with Industry April 30th in Baton Rouge
- Next Port Arthur Shrimper's Association Meeting July 2nd to discuss hurricane preparations



BOATER'S EDUCATION

9 AM - 4 PM

- **May 31st - Anahuac WildLife Refuge**
- **June 7th - Texas A&M AgriLife
Office - Beaumont**

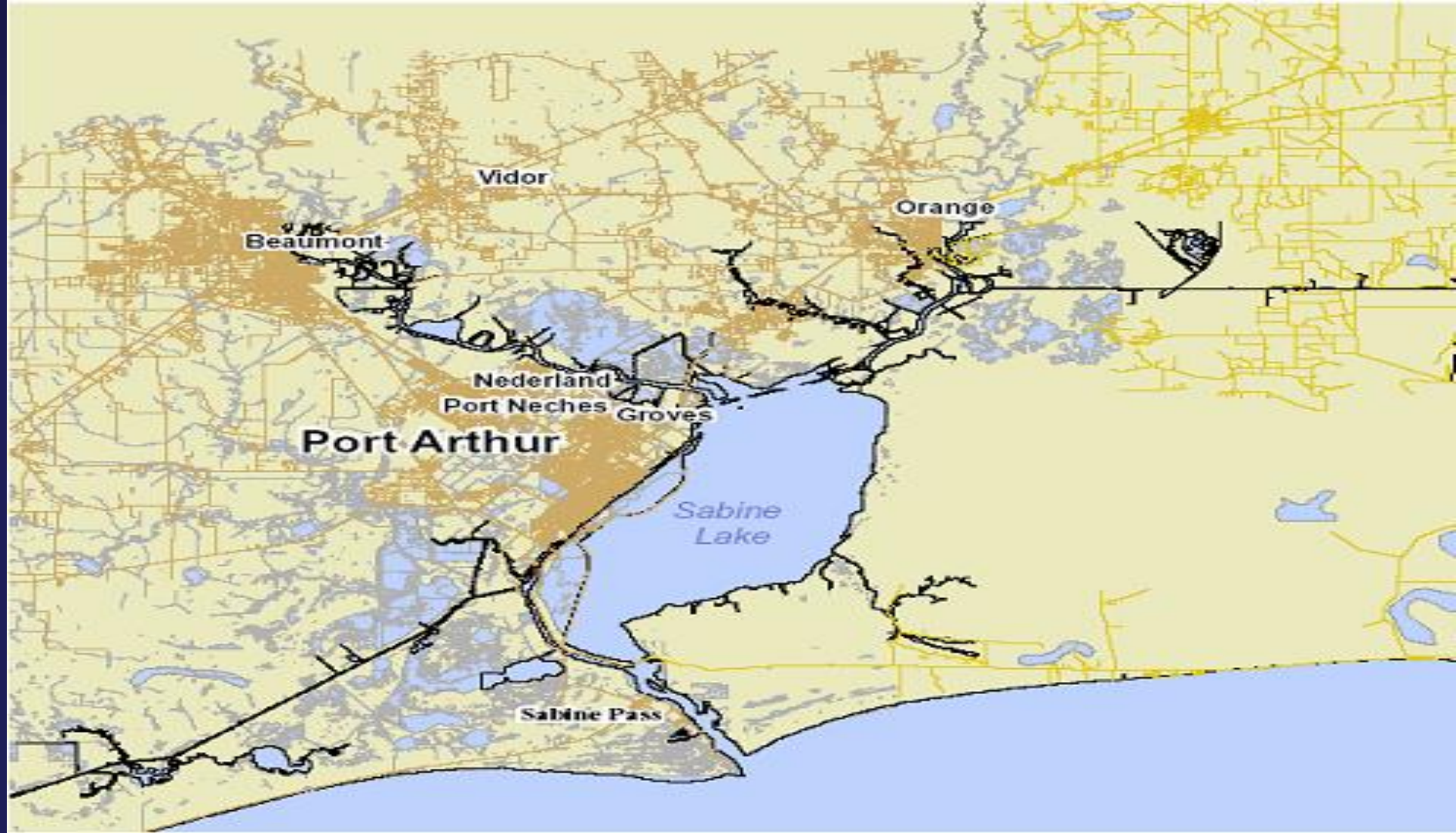
Pre Register on Texas Parks and Wildlife Website

Cost \$30

Currently Students are
signing up!

Camp
Seaport July
8- 12





**Waterway Maintenance and Improvement
Subcommittee Report**
Kyle Reed, Sabine-Neches Navigation District

Sabine-Neches Waterway

Operations and Maintenance Update

Timothy J. White, P.E., PMP
Resident Engineer

Sara C. Knoll, P.E.
Operations Manager

USACE – Galveston District

SETWAC Meeting
April 25, 2024



®

US Army Corps of Engineers
BUILDING STRONG®



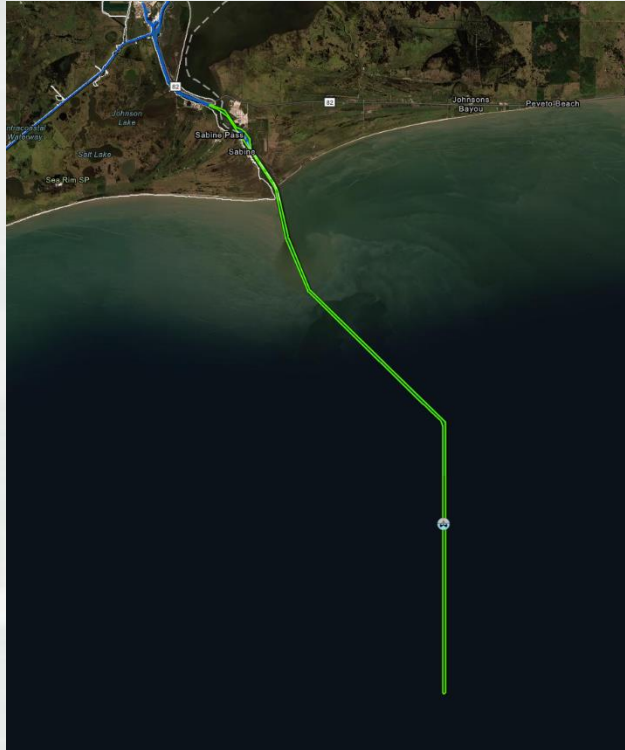
Ongoing Contracts

Sabine-Neches Waterway





SABINE-NECHES WATERWAY ENTRANCE CHANNEL TO SABINE PASS DEEPENING



WORK COMPLETE

Project:	Sabine-Neches Waterway – CIP (Contract #2A – Half Depth – Extension Channel to Sabine Bank)
Dredging Depth:	44 feet + Adv Maint
Dredging Quantity:	Est. 9 MCYs Federal Contract
Material Type:	NEW WORK
Placement Areas:	ODMDS 1-4 and A-D
Type of Equipment:	Hopper
Award:	September 2021
Req. Completion	November 2023

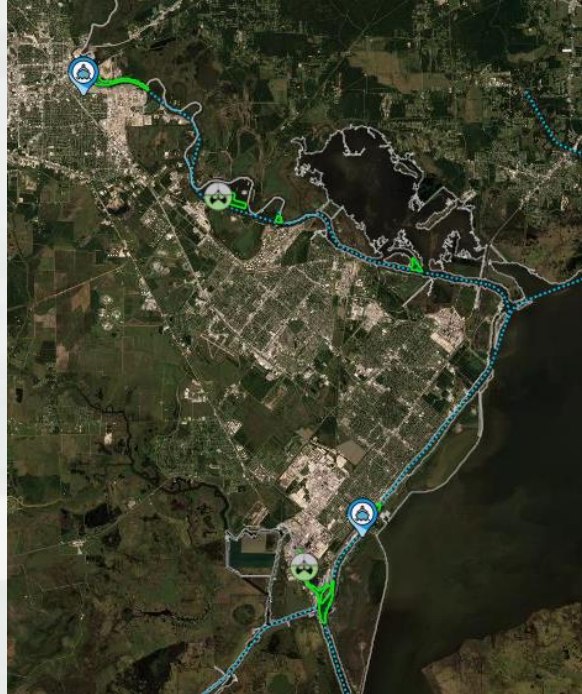
Contractor: Dutra



BUILDING STRONG®



SABINE-NECHES WATERWAY FY23 SNWW Maintenance Dredging



Dredge King Fisher working in the Neches River.

Project:	Sabine-Neches Waterway FY23 SNWW Maintenance Dredging
Dredging Depth:	40ft + Advance Maint.
Dredging Quantity:	3 MCY
Material Type:	MAINTENANCE
Dredge Type	Pipeline Dredge
Award:	August 2023
Req. Completion	August 2024

Contractor: Orion



BUILDING STRONG®



SABINE-NECHES WATERWAY SABINE BANK TO SABINE PASS DEEPENING



Project:	Sabine-Neches Waterway Sabine Bank Channel to Sabine Pass Channel Half Depth (Contract #2B)
Dredging Depth:	46/44 feet + Adv Maint.
Material Type:	NEW WORK
Award:	December 2023

Awarded by SNND.

Contractor: Great Lakes
Dredge & Dock



BUILDING STRONG®

FY 2024

Future Dredging Contracts

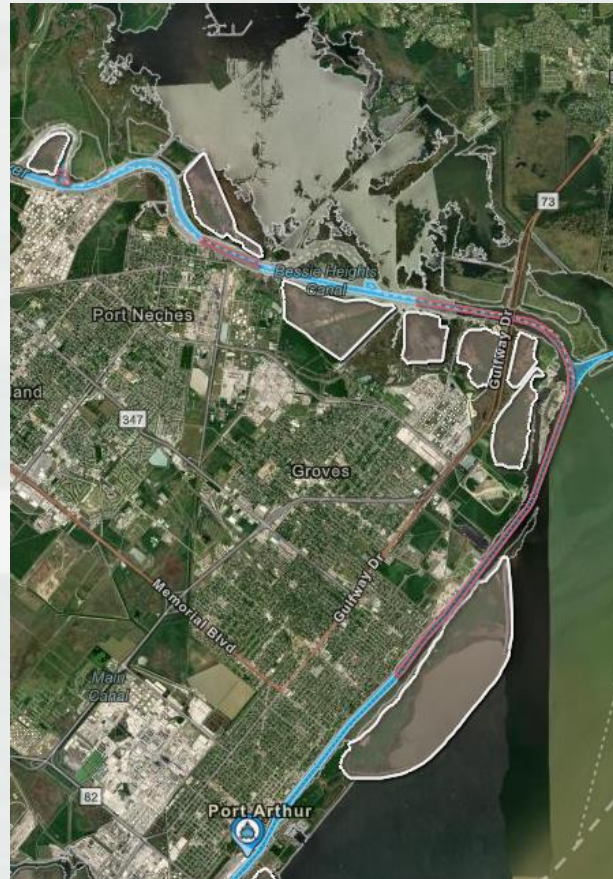
Sabine-Neches Waterway



BUILDING STRONG®



SABINE-NECHES WATERWAY FY24 SNWW Maintenance Dredging



Project:	Sabine-Neches Waterway FY24 SNWW Maintenance Dredging
Dredging Depth:	40ft. Authorized Depth
Dredging Quantity:	Est. 4.9 MCY
Material Type:	MAINTENANCE
Dredge Type	Pipeline Dredge
Advertisement	May 2024
Bid Opening	June 2024
Award:	August 2024
Est. Completion	March 2025

Contract includes Sabine-Neches Canal, Lower Neches River, and Turning Basin at Smith Bluff.





SABINE-NECHES WATERWAY PORT ARTHUR CANAL & TAYLOR'S BAYOU DEEPENING



Project:	Sabine-Neches Waterway Port Arthur Canal, Taylor's Bayou Half Depth (Contract #3)
Dredging Depth:	44 feet + Adv Maint.
Material Type:	NEW WORK
Award:	SNND: FY24

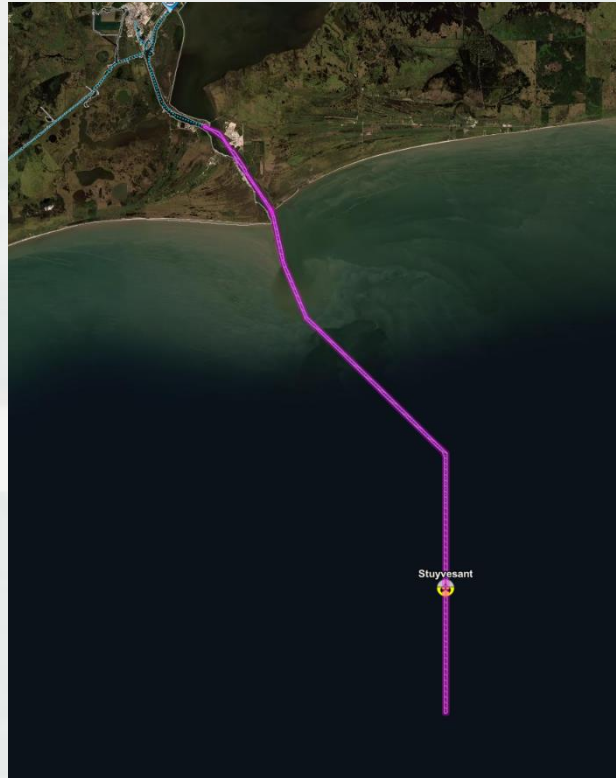
To be awarded by SNND.

Contractor: TBD





SABINE-NECHES WATERWAY EXTENSION CHANNEL TO SABINE PASS DEEPENING



Project:	Sabine-Neches Waterway – CIP (Contract #6 – Full Depth – Sabine Entrance Channel)
Dredging Depth:	48/50 feet + Adv Maint.
Material Type:	NEW WORK
Award:	USACE: FY 24

To be awarded by USACE.
Contract 6A & 6B combined.

Contractor: TBD

POC:
Franchelle Nealy
Project Manager
409-766-3187



**SABINE
TO GALVESTON
PORT ARTHUR
&
ORANGE**



BUILDING STRONG®



Orange County Coastal Storm Risk Management Project



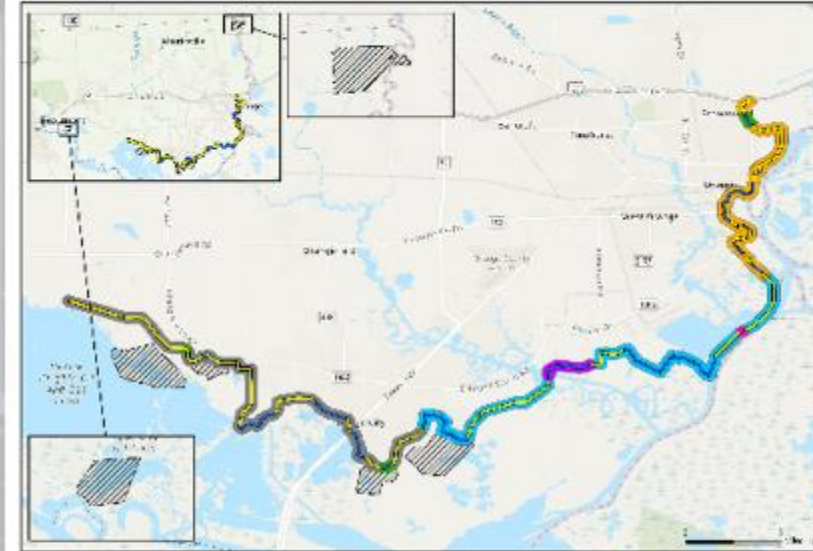
US Army Corps of Engineers

A new levee/floodwall system:

The Orange County Coastal Storm Risk Management (CSRM) Project includes construction of a new levee/floodwall system to reduce storm surge damage caused by hurricane and tropical storm events that affect the southern half of Orange County along the Sabine River and Bessie Heights Marsh. The proposed project alignment follows the edge of the Sabine and Neches River floodplain from the City of Orange and ends West of Bessie Heights, measuring approximately 26.3 miles. This includes construction of 15.6 miles of levees, 10.7 miles of floodwalls, 7 pump stations, 56 internal drainage structures, 32 closure gates located at road and railway crossings, 2 navigable sector gates and 6 environmental mitigation areas.

Objectives:

The new CSRM Project is intended to reduce risk to human life and reduce economic damages to business, residents, and infrastructure from storm surge while ensuring no **additional** induced interior flooding.



Orange County Coastal Storm Risk Management Project

Project Schedule:



Contract #	Scope	Contract #	Scope
OC01	Cow Bayou Complex – 84 ft Navigable Gate, Pump Station	OC04	7 Pump stations, tie ins, gates, drainage structures
OC02	2.4 miles floodwall, 3.0 miles levee, 18 gates, drainage structures	OC05	2.6 miles floodwall, 7.6 miles levee, 7 gates, drainage structures
OC02A	4.2 miles floodwall, 4.9 miles levee, 5 gates, drainage structures	OC06	6 Mitigation sites to compensate for impacts to forested wetlands and estuarine marsh
OC03	Adams Bayou Complex – 84 ft Navigable Gate, Pump Station		





Port Arthur and Vicinity Coastal Storm Risk Management Project



US Army Corps of Engineers

Reinforcement of an existing levee/floodwall system:

The Port Arthur and Vicinity Coastal Storm Risk Management (CSRM) Project in Jefferson County will result in improvements and additions to the existing Hurricane Flood Protection Project (HFPP). The plan includes raising approximately 5.5 miles of the existing 27.8 miles of earthen levee and constructing or reconstructing approximately 5.7 miles of floodwall. A separate 1,830 feet of new earthen levee will be constructed in the Port Neches area northwest of the existing northern terminus. Additionally, 26 vehicle closure structures will be replaced and erosion protections will be added.

Objectives:

The improved CSRM system is intended to increase the level of performance and resiliency of the existing Port Arthur and Vicinity HFPP.



Road closure gate



Port Arthur and Vicinity Coastal Storm Risk Management Project



Project Schedule:



Contract #	Scope	Contract #	Scope
PAV01	1.1 miles levee raise	PAV03A	3.3 miles levee raise, 1.9 miles floodwall replacement, 1 gate
PAV02	0.2 miles floodwall replacement	PAV03B	0.02 miles levee raise, 0.5 miles floodwall replacement, 7 gates
PAV03	0.1 miles levee raise, 1.0 miles floodwall replacement, 11 gates	PAV04	0.4 miles levee raise, 0.4 miles new levee, 2.0 miles floodwall replacement, 3 gates

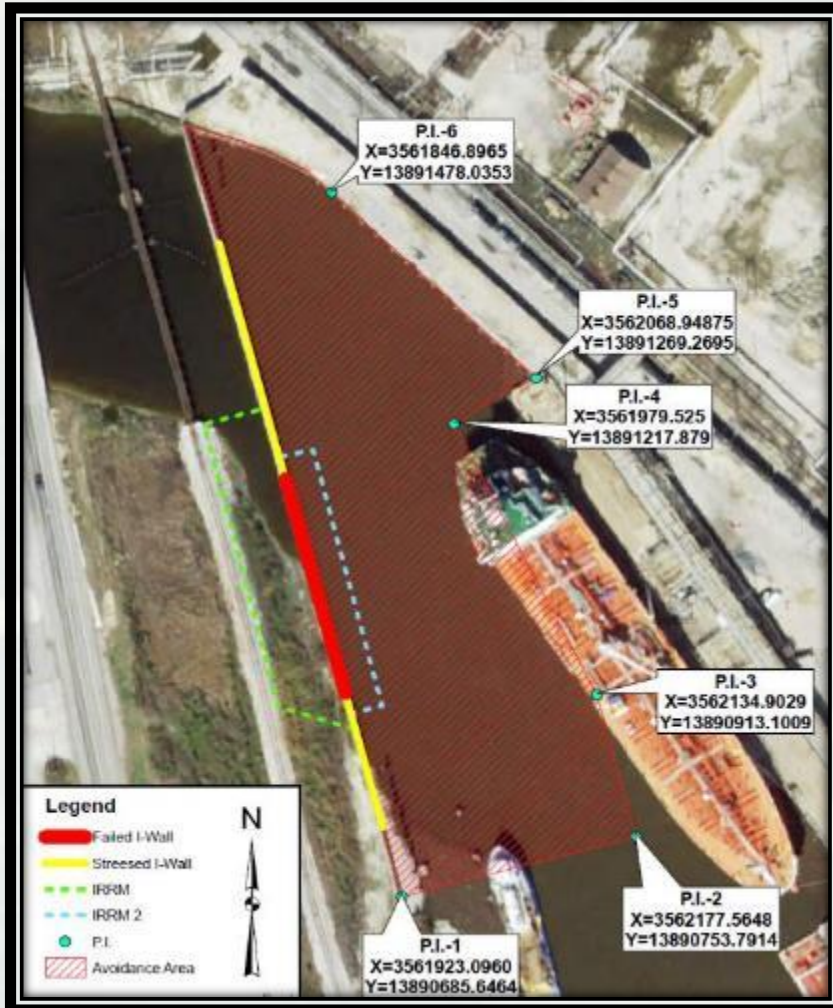


Taylor's Bayou



BUILDING STRONG®

Taylor's Bayou Current Restrictions



Current Status:

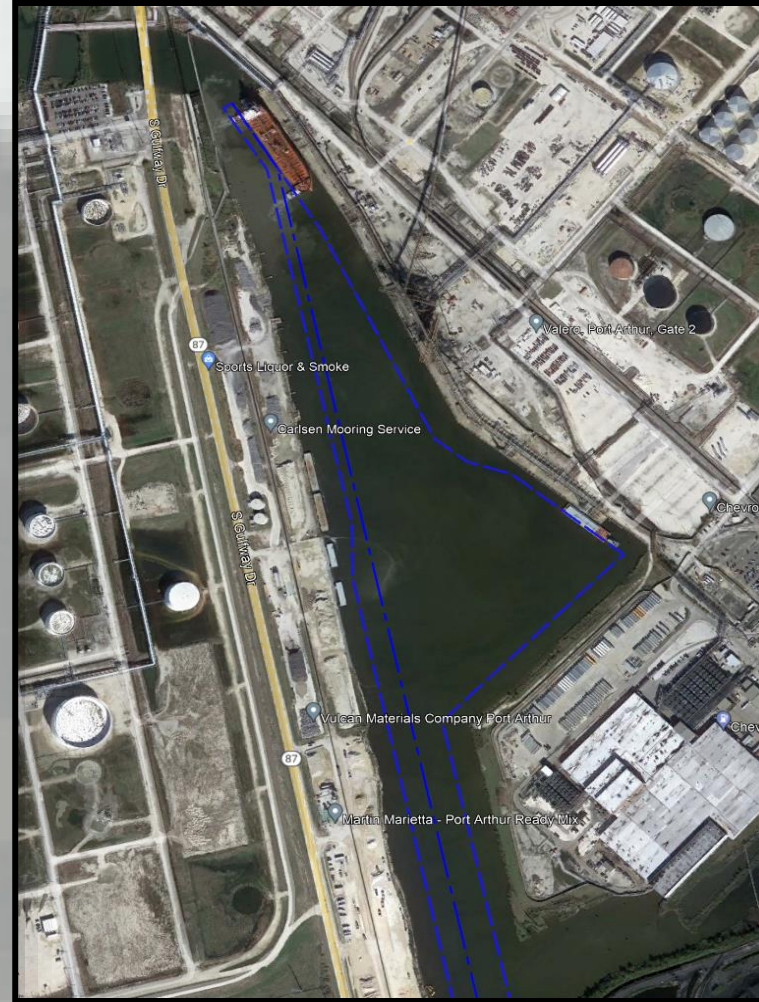
- Vessel Traffic Allowed in Hatched Area shown in Figure WITH LIMITATIONS put on tugs.
- Wall and temporary protection is being monitored by DD7 and USACE.



Taylor's Bayou Proposed Channel Improvement Changes



Current



Proposed



BUILDING STRONG®

Taylor's Bayou Proposed Channel Improvement Changes



Current



Proposed



BUILDING STRONG®

Questions?



Sara C. Knoll, P.E.
CESWG-ODN
409-207-3131
sara.c.knoll@usace.army.mil

Timothy J. White, P.E., PMP
CESWG-ECC-NP
409-985-2000 ext.1412
timothy.j.white@usace.army.mil



BUILDING STRONG®

MSU Port Arthur Port Security Specialist



Michael J. Hiatt

409-284-5775 Mobile

409-723-6525 Desk

Michael.j.hiatt2@uscg.mil

Southeast Texas and Southwest Louisiana Area Maritime Security Committee

Meetings:

Area Maritime Security Committee and Anti-Terrorism Task Force-24, July 0930-1130, Orange County EOC.

FSO/VSO Sub-Committee Meeting - 20 June 2024 10-12. ISTC Beaumont

Southeast. Maritime Operations Committee - 9 May 2024, 1000-1200, Orange County EOC

Exercises:

SETX/SWLA AMSTEP - 27 JUN, 0900-1200, Location TBD, Lake Charles, LA, Workshop with a Transportation Security Incident initiated with a Cyber Attack.

Port Security Grants Program

FEMA Grant POC:

Lurranda "Rene" Phillips

(202)368-5487 Work Mobile

(202)786-9735 Desk

Lurranda.Phillips@fema.dhs.gov

Port Security Grant Program FY24

- The FY24 Port Security Grant Program was announced on April 16th.
- In Fiscal Year (FY) 2024, the U.S. Department of Homeland Security (DHS) is providing \$90 million to promote sustainable, risk-based efforts to protect critical port infrastructure from acts of terrorism.

In assessing the national risk profile for FY 2024, two areas warrant the most concern:

- 1) Enhancing cybersecurity; and 2) enhancing the protection of soft targets/crowded places.
- 2) Completed applications must be submitted in the FEMA GO system no later than 5 p.m. ET on June 24, 2024.

Michael J. Hiatt

409-284-5775 Mobile

409-723-6525 Desk

Michael.j.hiatt2@uscg.mil

USCGC ANT Sabine ATON Report

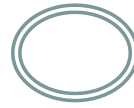




DISCREPANCIES IN SABINE-NECHES WATERWAY AS OF 25APR24

LLNR	AID NAME	DISCREPANCY
1085	SABINE BANK CHANNEL LIGHTED BUOY SB	LT EXT
1105	SABINE PASS EAST JETTY LT	LT EXT
22630	SABINE PASS LIGHT 38	STRUCT DEST/TRLB
22915	SABINE-NECHES CANAL LIGHT 52A	STRUCT DEST/TRLB
22980	SABINE-NECHES CANAL LIGHT 64	STRUCT DEST/TRLB
22995	SABINE-NECHES CANAL LIGHT 65	STRUCT DEST/TRLB
23000	SABINE-NECHES CANAL LIGHT 66	STRUCT DEST/TRLB
23050	SABINE-NECHES CANAL LIGHT 74	STRUCT DEST/TRLB
23115	SABINE RIVER LIGHT 5	STRUCT DEST/TRLB
23135	SABINE RIVER DAYBEACON 10	STRUCT DEST/TRUB
23170	SABINE RIVER OUTER Q RFL	DAYMK DMGD
23220	SABINE RIVER LIGHT 24	STRUCT DEST/TRLB
23360	NECHES RIVER LIGHT 22	DAYMK DMGD/STRUCT DEST/TRLB
23455	NECHES RIVER LIGHT 40A	STRUCT DEST/TRLB

QUESTIONS/COMMENTS ?





New Business

2024 Hurricane Season Brief

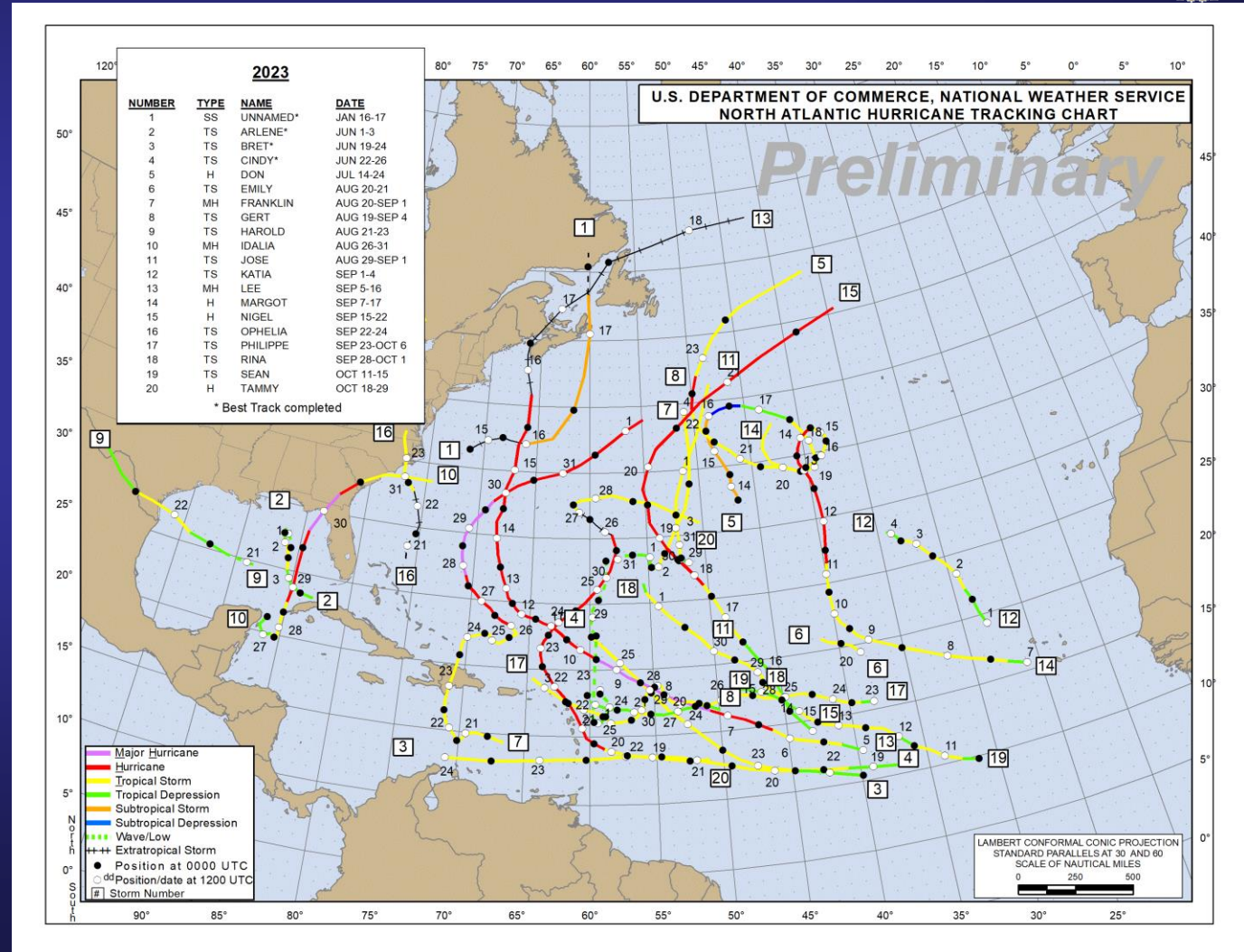


LT Sean Yanez

2023 Hurricane Season Recap



- 4th most active Atlantic hurricane season on record
- 20 Named Storms
 - 7x Hurricanes
 - 3x CAT 3 or Stronger
- Earliest Storm: Tropical Storm Arlene (02 June)
- Last Storm: Tropical Storm Tammy (18 October)



Source:
<https://www.nhc.noaa.gov/data/tcr/index.php>

2024 HURRICANE SEASON PREDICTIONS



ATLANTIC HURRICANE SEASON FORECAST

2024

Exclusive AccuWeather Forecast

	Named Storms	Hurricanes	Major Hurricanes	Accumulated Cyclone Energy (ACE)	Direct U.S. Impacts
Forecast 2024	20-25	8-12	4-7	175-225	4-6
Previous Year 2023	19	7	3	145.6	4
30-Year Historical Average 1990-2020	14	7	3	123	4

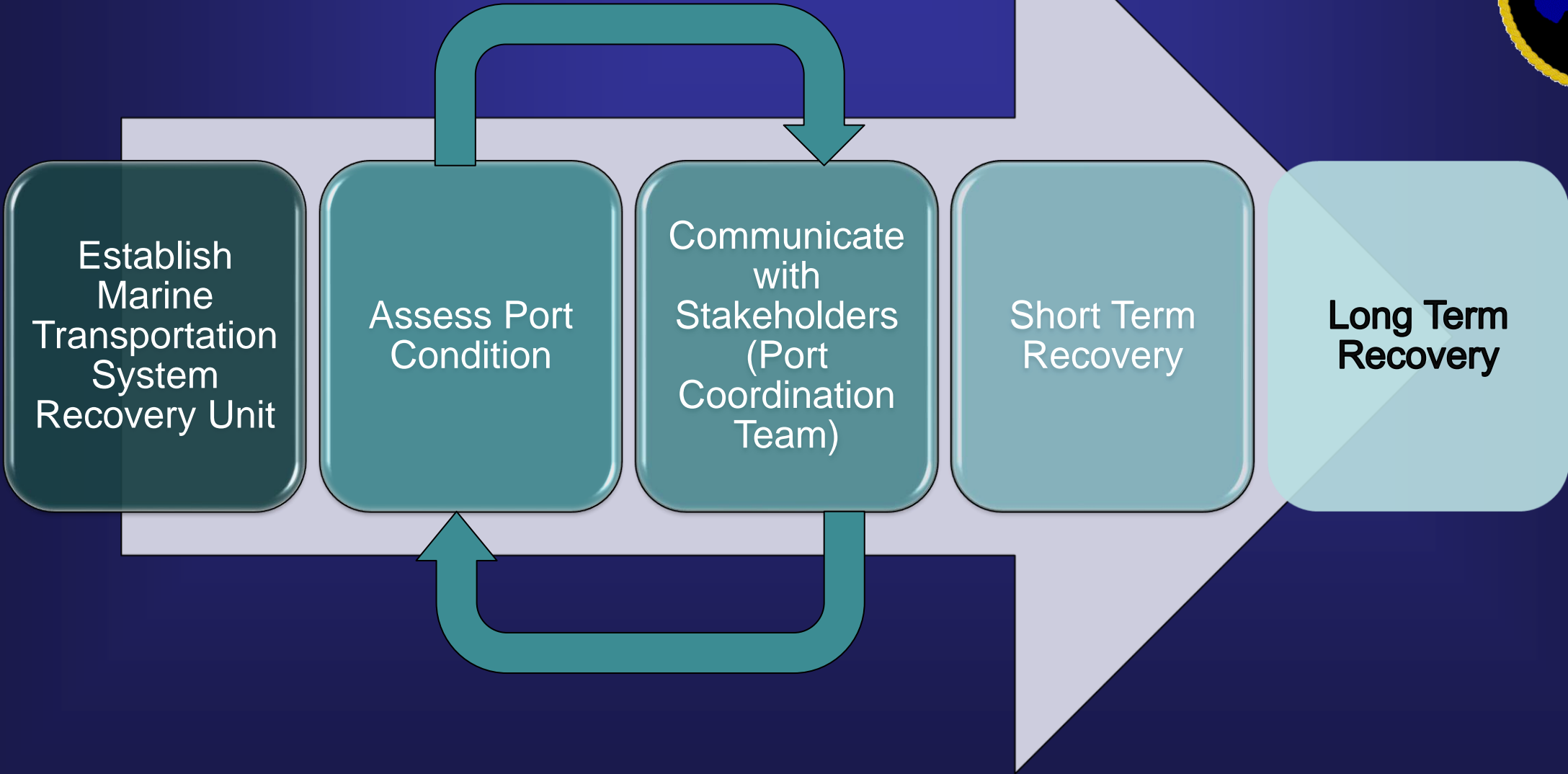
AccuWeather

ATLANTIC STORM NAMES

2024 HURRICANE SEASON

ALBERTO	HELENE	OSCAR
BERYL	ISAAC	PATTY
CHRIS	JOYCE	RADAEAL
DEBBY	KIRK	SARA
ERNESTO	LESLIE	TONY
FRANCINE	MILTON	VALERIE
GORDON	NADINE	WILLIAM





Establish
Marine
Transportation
System
Recovery Unit

Assess Port
Condition

Communicate
with
Stakeholders
(Port
Coordination
Team)

Short Term
Recovery

Long Term
Recovery

Port Coordination Team

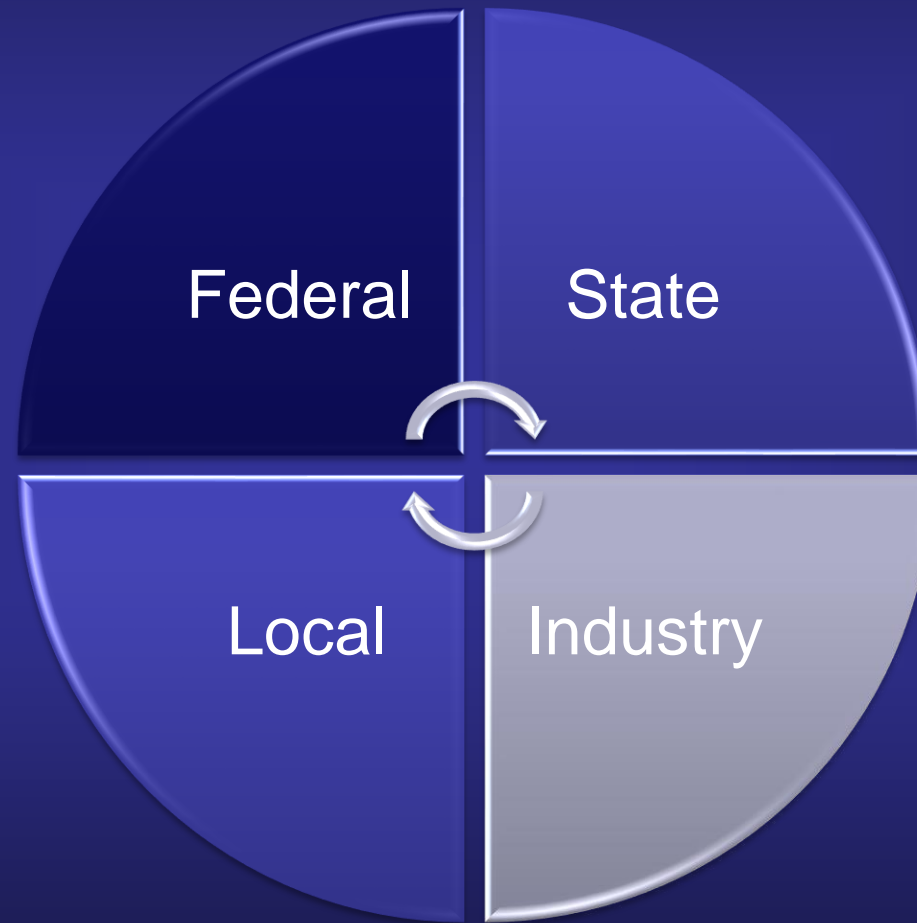


USCG
CBP
FEMA
MARAD

NOAA
NWS

USACE
MSC
SDDC

TGLO
TXDOT
TX DPS
TRRC



S-N Chiefs Assoc.
S-N Nav District
Jefferson Cty Judge
Jefferson Cty Sheriff
LNVA
City Governments

Sabine Pilots
Harbor Tugs
GICA
Facility Reps
Allied Services

New Hurricane Safety Zone



Port Condition	Parameters	Measures
<i>WHISKEY</i>	Sustained gale force winds of 39-54 mph predicted to make landfall at port within <u>72 hours</u>	<ul style="list-style-type: none">• Vessel/Facility Preparations• Submission of Notice of Intent to Remain in Port before X-RAY
<i>X-RAY</i>	Sustained gale force winds of 39-54 mph predicted to make landfall at port within <u>48 hours</u>	<ul style="list-style-type: none">• Secure HAZMAT/flying debris• VsIs > 500 GT leave port unless otherwise approved to remain• Facilities prepare to terminate cargo ops



Port Condition	Parameters	Measures
YANKEE	Sustained gale force winds of 39-54 mph predicted to make landfall at port within <u>24 hours</u>	<ul style="list-style-type: none">• Affected ports closed to inbound traffic except when authorized by COTP• Facilities terminate cargo ops not associated w/ storm prep
ZULU	Sustained gale force winds of 39-54 mph predicted to make landfall at port within <u>12 hours</u>	<ul style="list-style-type: none">• Affected ports closed to all traffic except when authorized by COTP• Cargo operations suspended
RECOVERY	Sustained gale force winds from a tropical hurricane force storm are no longer predicted for the designated area.	<ul style="list-style-type: none">• Designated areas are closed to all traffic & rec vessels > 65-feet• Based on port assessments, the COTP may permit vessel movements with restrictions

Marine Information



MSIB



BNTM

VTS Advisory





U.S. Department of Homeland Security
U.S. COAST GUARD

Marine Safety Unit

Port Arthur, Texas



Marine Safety Information Bulletin

18-20

August 31, 2020

Hurricane Laura



Calcasieu Waterway

1. No vessel movements allowed at this time.

Sabine Neches Waterway

The Sabine-Neches Waterway is open to limited traffic. The following restrictions are in effect:

1. Vessels greater than 500-gross tons (GT) are restricted until an assessment of deep draft channels are completed. Test runs of limited draft vessels will begin a.m. August 30, 2020.
2. A dry dock is sunk in the Sabine-Neches Canal 2-miles south of Beans Fleet. No vessels may operate within ½ mile of the sunk dry dock without permission of "Port Arthur Traffic" (VTS) or the Captain of the Port.
 - a. While the dry dock remains sunk in the channel, no vessels will be allowed to pass during night time hours.
 - b. Barge configurations allowed to pass will be limited based on the condition and location of the dry dock. Contact "Port Arthur Traffic" for details.

Captain of the Port Details



MARINE SAFETY UNIT PORT ARTHUR (08-33241)
2901 TURTLE CREEK DRIVE
PORT ARTHUR TX
Primary Phone: (409) 723-8500
Emergency Phone: (409) 723-8500
Fax Number: (409) 723-8534
Rescue 21 VHF DSC MMSI Number:

Response Phone: 409-719-5011
Incident Mgmt. Phone: 409-719-5034
Enforcement Phone: 409-719-5013
Prevention Phone: 409-723-8584
Inspection Phone: 409-723-8572
Investigations Phone: 409-723-8591
Waterways Management Phone: 409-719-5080
Prep/Planning Phone: 409-723-8525
Facilities Branch Phone: 409-723-8590
Commercial Fishing Vessel Phone: N/A
Foreign Vessel Exams Phone: N/A
Facility Inspection Branch Phone: 409-719-5033



National Response Center Number: 800-424-8802 - Contact the NRC for oil spills, hazmat releases, and America's Waterway Watch.

Port Status Information

Port	Port Status	Comments	Last Changed
ORANGE	■ Open with Restrictions	MSIB 02-13 - 23.5 Foot Draft Restriction	2020-11-16
BEAUMONT (TX)	■ Open		2020-10-22
CAMERON	■ Open		2020-11-16
CC BUOY LAKE CHARLES P.S.	■ Open		2020-11-16
LAKE CHARLES	■ Open		2020-11-16
PORT ARTHUR	■ Open		2020-10-22
SABINE	■ Open		2020-10-22
SABINE BAR	■ Open		2021-05-06

Showing 1 to 8 of 8 entries

Previous **1** Next

COTP MARSEC Level



The Captain of the Port has set MARSEC Level 1 for the Port Arthur and Lake Charles COTP Zone.

Modified: 2020-02-13



Resources For Personal Hurricane Prep



- ▶ **Texas Dept. of Insurance 1-800-252-3439 - www.tdi.state.tx.us**
- ▶ **FEMA Information Ready 1-800-BE-READY - www.ready.gov**
- ▶ **American Red Cross Beaumont Chapter 409-832-1644 - www.redcrossbeaumont.org**
- ▶ **National Flood Insurance Program- www.floodsmart.gov**
- ▶ **Southeast Texas Information- www.setinfo.org**
- ▶ **National Hurricane Center- www.nhc.noaa.gov**
- ▶ **National Weather Service Lake Charles- www.weather.gov/lch**
- ▶ **ISTC Smart Storm Preparedness Courses: <https://www.istc.net/ssp/>**

WATERWAYS/VTS CONTACTS



- **LCDR Kim Gates, Waterways Division Chief, MSU Port Arthur**
(409) 277-1752 kimberly.m.gates@uscg.mil
- **Darin Mathis, VTS Director**
(409) 719-5080 darin.e.mathis@uscg.mil
- **Douglas Hendrix, Operation/Training Manager,**
(409) 719-5083 douglas.g.hendrix2@uscg.mil
- **Vessel Traffic Center, Watch Supervisor 24hrs**
(409) 719-5070 msuportarthur-vtssup@uscg.mil
- **VTS Webpage –** <https://www.atlanticarea.uscg.mil/vtspportarthur/>
- **Homeport Website –** <http://homeport.uscg.mil>

SETWAC Executive Secretary



“An Executive Secretary, usually an unelected, non-voting member of the USCG Command or other government agency, will provide administrative support at no charge.

Duties include:

1. Maintaining the membership listing
2. Recording and mailing meeting minutes,
3. Distributing announcements and agendas for meetings
4. Distributing other materials, and
5. Posting of information to the SETWAC web page”



Full Committee Meeting
25 April 2024